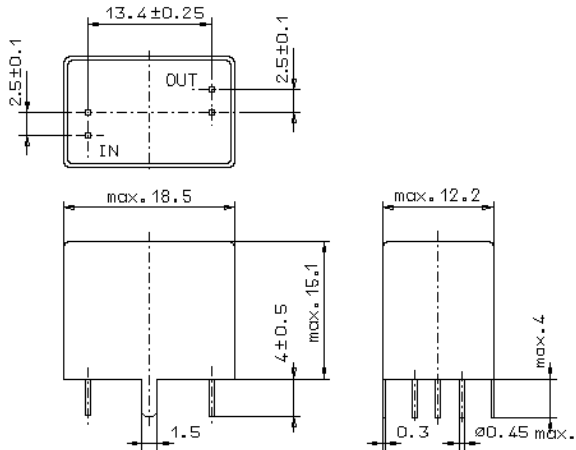


Specification for monolithic crystal filter:

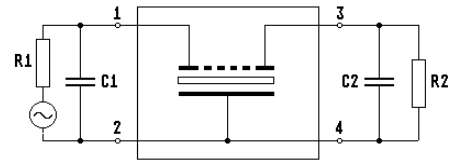
MQF 21.4-1500 / 31
2722 172 90097

1. General

1.1. Package:



GV5.4



- 1.2. Type name: MQF 21.4-1500/31
- 1.3. Number of poles: 8
- 1.4. Operable temperature range: -30°C to +80°C
- 1.5. Operating temperature range: -25°C to +70°C
- 1.6. Storage temperature range: -55°C to +80°C

2. Electric values

- 2.1. Nominal centre frequency fo: 21.4 MHz
- 2.2. **Pass band**
 - 2.2.1. Bandwidth between 3 dB - frequencies: $\geq f_o \pm 7.5$ kHz
 - 2.2.2. Ripple: ≤ 2.0 dB at $f_o \pm 6.0$ kHz
 - 2.2.3. Insertion loss: ≤ 3.0 dB
(measured on smallest attenuation in pass band)
- 2.3. **Stop band**
 - 2.3.1. $f_o \pm 17.5$ kHz ≥ 65 dB
 - 2.3.2. $f_o \pm 25$ kHz..... ± 300 kHz ≥ 90 dB
- 2.4. Terminating impedance (input and output): $1600 \Omega // 1.5$ pF
- 3. Marking: manufacturer, date code
21.4-1500/31
- 4. Environment conditions: Corresponding to Vectron standard CF001
- 5. Filters are Pb-free and 2002 /95 / EC RoHS compliant

Edited by: _____ date: _____ name: _____