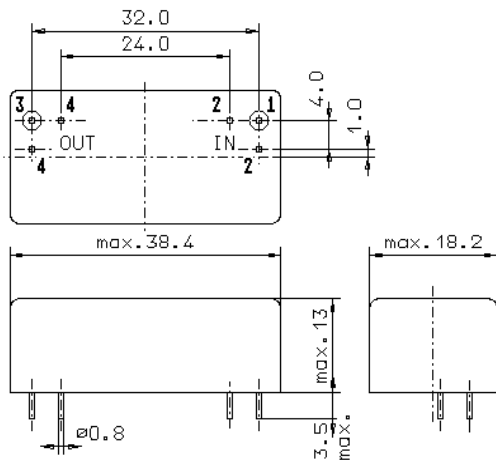


Specification for monolithic crystal filter:

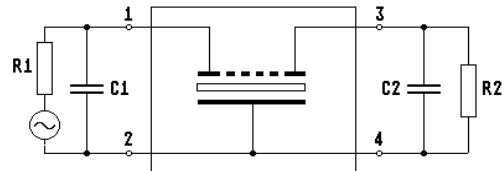
**MQF 10.7018-0300/03**

## 1. General

### 1.1. Package:



GM17



- |                                   |                     |
|-----------------------------------|---------------------|
| 1.2. Type name:                   | MQF 10.7018-0300/03 |
| 1.3. Number of poles:             | 6                   |
| 1.4. Operating temperature range: | -20°C to +70°C      |
| 1.5. Storage temperature range:   | -45°C to +85°C      |

## 2. Electric values

- |                                   |             |
|-----------------------------------|-------------|
| 2.1. Nominal centre frequency fo: | 10.7018 MHz |
|-----------------------------------|-------------|

### 2.2. Pass band

- |   |                                    |
|---|------------------------------------|
| 2.2.1. Bandwidth between 3 dB - frequencies:                                | $\geq f_o \pm 1.3$ kHz             |
| 2.2.2. Ripple:  | $\leq 2.0$ dB at $f_o \pm 1.1$ kHz |
| 2.2.3. Insertion loss:<br>( measured on smallest attenuation in pass band ) | $\leq 3.0$ dB                      |

### 2.3. Stop band

- |  |   |
|--|---|
| 2.3.1. $f_o \pm 5.0$ kHz                         | $\geq 60$ dB                            |
| 2.3.2. Alternate attenuation:                    | $\geq 85$ dB ( except spurious )        |
| 2.4. Terminating impedance ( input and output ): | $50 \Omega // 0$ pF                     |
| 2.5. Maximum input power level:                  | +10 / +20 ( working / non-damaged )     |
| 2.6. Intermodulation:                            |   |
| frequency 1:                                     | 10.7028 MHz                             |
| frequency 2:                                     | 10.7008 MHz                             |
| input power level at pin 1( input ):             | 0 dBm                                   |
| IM (IP3 > +33 dBm):                              | > 66 dB (referred to input power level) |

- |             |   |
|-------------|---|
| 3. Marking: | manufacturer, date code<br>MQF 10.7018-0300/03<br>OEM marking on demand |
|-------------|---|

- |                            |   |
|----------------------------|---|
| 4. Environment conditions: | Corresponding to Vectron standard CF001 |
|----------------------------|---|

Edited by: \_\_\_\_\_ date: \_\_\_\_\_ name: \_\_\_\_\_