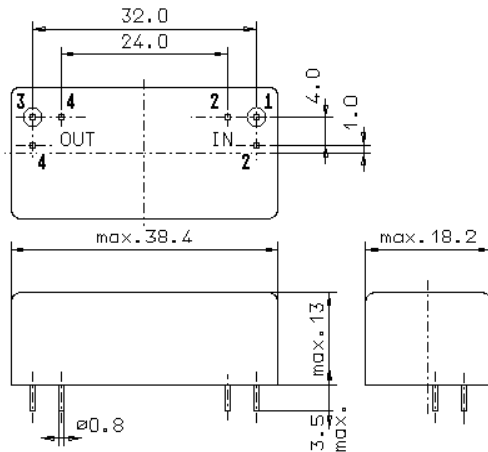


Specification for monolithic crystal filter:

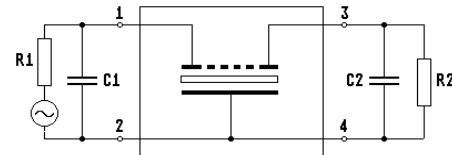
**MQF 10.7-1500/06V0**

## 1. General

### 1.1. Package:



GM17



- |                                   |                    |
|-----------------------------------|--------------------|
| 1.2. Type name:                   | MQF 10.7-1500/06V0 |
| 1.3. Number of poles:             | 8                  |
| 1.4. Operable temperature range:  | -30°C to +80°C     |
| 1.5. Operating temperature range: | -25°C to +70°C     |
| 1.6. Storage temperature range:   | -55°C to +105°C    |

## 2. Electric values

- |   |   |
|---|---|
| 2.1. Nominal centre frequency $f_0$ :                                       | 10.7 MHz  |
| 2.2. <b>Pass band</b>   |   |
| 2.2.1. Centre frequency $f_c$ :   | 10.7 MHz $\pm$ 300 Hz                             |
| 2.2.2. Bandwidth between 3 dB - frequencies:                                | $\geq f_c \pm 7.5$ kHz<br>$\leq f_c \pm 8.25$ kHz |
| 2.2.3. Ripple:  | $\leq 1.0$ dB at $f_c \pm 6.0$ kHz                |
| 2.2.4. Insertion loss:<br>( measured on smallest attenuation in pass band ) | $\leq 3.5$ dB                                     |
| 2.3. <b>Stop band</b>   |   |
| 2.3.1. $f_c \pm 17.5$ kHz   | $\geq 70$ dB                                      |
| 2.3.2. $f_c \pm 25$ kHz..... $\pm 500$ kHz                                  | $\geq 90$ dB                                      |
| 2.4. Terminating impedance ( input and output ):                            | $910 \Omega \pm 10\%$ // $25$ pF $\pm 5$ pF       |
| 2.5. Maximum input power:   | 10 mW   |
| 3. Marking:   | manufacturer, date code<br>MQF 10.7-1500/06V0     |
| 4. Environment conditions:  | Corresponding to Vectron CF001                    |

Edited by: \_\_\_\_\_ date: \_\_\_\_\_ name: \_\_\_\_\_