



## Non-Insulated Terminals Bifurcated Hollow Miniature

Please refer to Figure 1308

Part No.	Board Thick	Mounting Hole Dia $+0.003$ $-0.001$	D Nom	L Nom	Swage Tool
1308A	.021	.116	.114	.075	1308
1308B	.062	.116	.114	.105	1308
1308C	.094	.116	.114	.135	1308
1308D	.125	.116	.114	.165	1308
1308E	.190	.116	.114	.227	1308

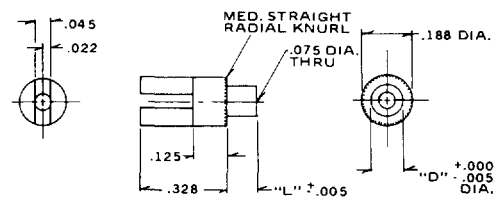


Fig. 1308

Please refer to Figure 1310

Part No.	Board Thick	Mounting Hole Dia $+0.003$ $-0.001$	D Nom	L Nom	Swage Tool
1310A	.031	.116	.114	.075	1310
1310B	.062	.116	.114	.105	1310
1310C	.094	.116	.114	.135	1310
1310D	.125	.116	.114	.165	1310

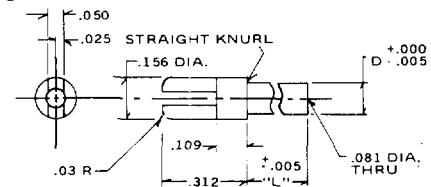


Fig. 1310

Please refer to Figure 1391

Part No.	Board Thick	Mounting Hole Dia $+0.003$ $-0.001$	D Nom	L Nom	Swage Tool
1391A	.031	.153	.151	.075	1391
1391B	.062	.153	.151	.105	1391
1391C	.094	.153	.151	.135	1391
1391D	.125	.153	.151	.165	1391
1391E	.155	.153	.151	.195	1391
1391F	.190	.153	.151	.230	1391

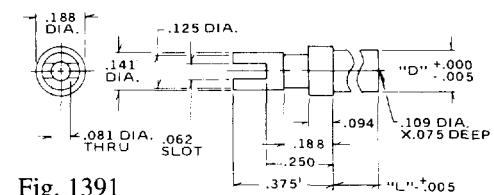


Fig. 1391

## Non-Insulated Terminals Bifurcated Solid

Please refer to Figure 2023

Part No.	Board Thick	Mounting Hole Dia $+0.003$ $-0.001$	D Nom	L Nom	Swage Tool
2023AA	.016	.050	.048	.037	2023
2023A	.031	.050	.048	.053	2023
2023B	.062	.050	.048	.084	2023
2023C	.094	.050	.048	.115	2023
2023D	.125	.050	.048	.147	2023

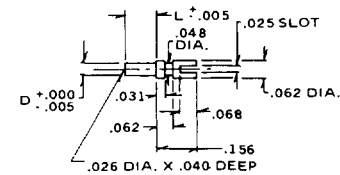


Fig. 2023

Please refer to Figure 2003

Part No.	Board Thick	Mounting Hole Dia $+0.003$ $-0.001$	D Nom	L Nom	Swage Tool
2003AA	.015	.065	.063	.037	2003
2003A	.031	.065	.063	.053	2003
2003B	.062	.065	.063	.084	2003
2003C	.094	.065	.063	.115	2003
2003D	.125	.065	.063	.147	2003
2003E	.156	.065	.063	.179	2003

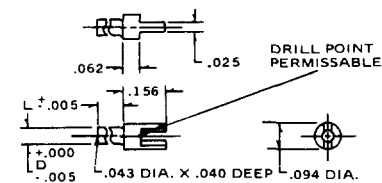


Fig. 2003

Standard Plating Suffix to Part Number  
See Page 93 for all plating options.

Terminal  
-1 (Ag over Cu)

TOLERANCE: .xxx  $\pm$  .005, .xx  $\pm$  .01 (ALL DIMS. BEFORE PLATING)