



**Non-Insulated Terminals  
Bifurcated Hollow Sub  
& Micro Miniature**

Please refer to Figure 2002

Part No.	Board Thick	Mounting Hole Dia	+0.003 -0.001	D Nom	L Nom	Swage Tool
2002AA	.016	.044		.042	.037	2002
2002A	.031	.044		.042	.053	2002
2002B	.062	.044		.042	.084	2002
2002C	.094	.044		.042	.115	2002
2002D	.125	.044		.042	.147	2002

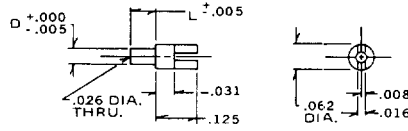


Fig. 2002

**Non-Insulated Terminals  
Bifurcated Hollow Sub  
& Micro Miniature**

Please refer to Figure 2006

Part No.	Board Thick	Mounting Hole Dia	+0.003 -0.001	D Nom	L Nom	Swage Tool
2006AA	.015	.044		.042	.037	2006
2006A	.031	.044		.042	.053	2006
2006C	.094	.044		.042	.115	2006
2006D	.125	.044		.042	.147	2006

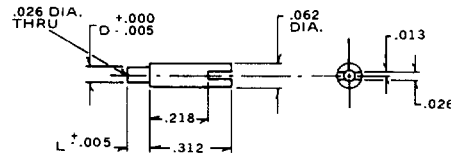


Fig. 2006

Please refer to Figure 2024

Part No.	Board Thick	Mounting Hole Dia	+0.003 -0.001	D Nom	L Nom	Swage Tool
2024AA	.016	.050		.048	.037	2024
2024A	.031	.050		.048	.053	2024
2024B	.062	.050		.048	.084	2024
2024C	.094	.050		.048	.115	2024
2024D	.125	.050		.048	.147	2024

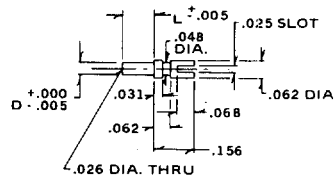


Fig. 2024

**Non-Insulated Terminals  
Bifurcated Hollow  
Miniature**

Please refer to Figure 1309

Part No.	Board Thick	Mounting Hole Dia	+0.003 -0.001	D Nom	L Nom	Swage Tool
1309A	.031	.093		.091	.075	1309
1309B	.062	.093		.091	.105	1309
1309C	.094	.093		.091	.135	1309
1309D	.125	.093		.091	.165	1309
1309Z	.084	.093		.091	.125	1309

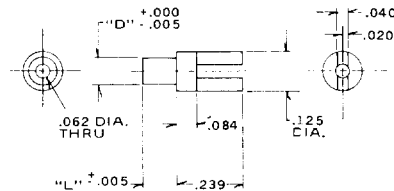


Fig. 1309

Please refer to Figure 1250

Part No.	Board Thick	Mounting Hole Dia	+0.003 -0.001	D Nom	L Nom	Swage Tool
1250A	.031	.116		.114	.075	1250
1250B	.062	.116		.114	.105	1250
1250C	.094	.116		.114	.135	1250
1250D	.125	.116		.114	.165	1250

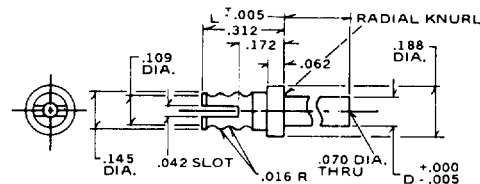


Fig. 1250

**Standard Plating Suffix to Part Number**  
See Page 93 for all plating options.

**Terminal**  
-I (Ag over Cu)

TOLERANCE: .xxx ± .005, .xx ± .01 (ALL DIMS. BEFORE PLATING)