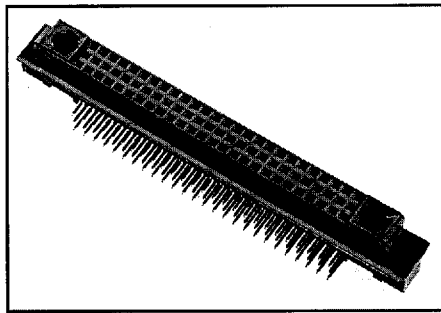


DIN Inverse Style M Multipurpose

6093 Series

Multipurpose Socket Connector



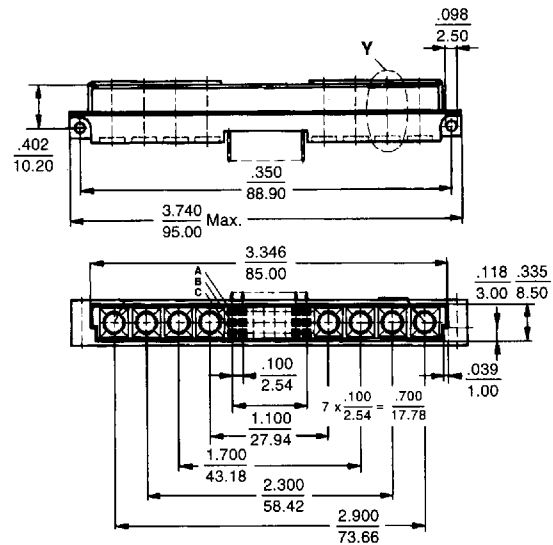
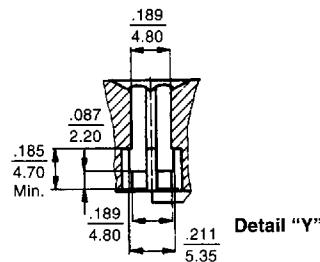
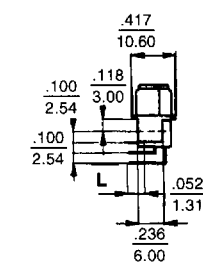
OUTLINE

Special Contacts:

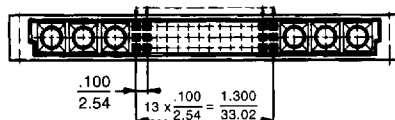
- High Current
- High Voltage
- Coax

See page DN / 29-32

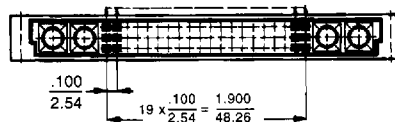
Socket Connector 24 Contacts



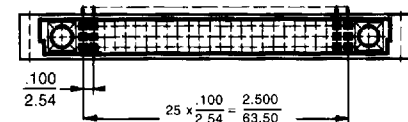
Socket Connector 42 Contacts



Socket Connector 60 Contacts



Socket Connector 78 Contacts



ORDERING INFORMATION

Example: 24S 6093-0731-0

24S 6093 07 31 0

Step 1

Style:
 06S = 6 + 10
 24S = 24 + 8
 42S = 42 + 6
 60S = 60 + 4
 78S = 78 + 2

Step 2

Series:
 6093

Step 3

Contact Configuration:

Code	Contact Sequence	Row
01	All positions	A
04	All positions	A & B
05	All positions	A & C
07	All positions	A, B & C
14	Even positions	
15	Even positions	
17	Even positions	

Step 4

Performance Class:

Code	Contact Area	Terminal
22	Class 1	Tin / Lead
31	Class 2	Tin / Lead

Step 5

Termination:

Code	Dip Solder
2	.024 x .012 L = .146 (3.7 mm)
0	.024 x .012 L = .118 (3 mm)

Recognized under the Component Program of Underwriters Laboratories Inc. File No. E136181, to Standard UL 1863

DIN

SPECIFICATIONS

Series	6053	6063	6093
DIN 41612 Style	C Flat cable (IDC socket)	M	M Inverse

GENERAL

No. of Contacts (Max.)	32,64	24,42,60,78 Max. 8 special contacts	24,42,60,78 Max 8 Special Contacts
Temperature Range	-65°C to +140°C	-65°C to +140°C	-65°C to +140°C

ELECTRICAL DATA

Current Rating	1 Amp @ 70°C	1 A, High Current Contact 30 A	1 A, High Current Contact 30A
Contact Resistance	20 Milliohms (Max)	20 Milliohms (Max) High Current Contact 1 Milliohm	20 Milliohms (Max) High Current Contact 1 Milliohm

MATERIALS

Insulator	Thermoplastic Polyester	Thermoplastic Polyester	Thermoplastic Polyester
Contact (Pin)	—	CuZn	—
Contact (Socket)	CuNiSn	CuZn	CuSn

MATING FORCES

Insertion Force (Max)	32 Pos. 6.6 lb 64 Pos. 13.2 lb	Depending on Contact Arrangement	Depending on Contact Arrangement
Withdrawal Force (Min.)	.54 oz per contact	.54 oz/Signal Contact	.54 oz/Signal contact

APPROVALS

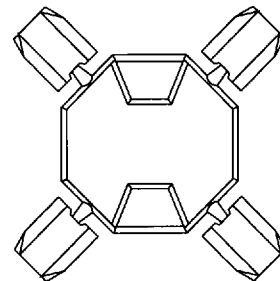
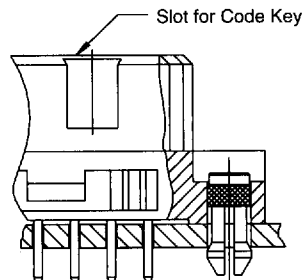


SPECIAL FEATURES

Code Keys

The 6033 series standard DIN connectors are designed with an effective code keying method built in. This is useful to assure that only specific connector pairs are allowed to mate in a system.

1. Install the code key into any chosen slot(s) on the female socket connector. Code keys are supplied in groups of four individual keys supplied on a carrier.
2. Use the polarization knock-out tool supplied by Winchester to remove the corresponding slot in the wall of the male DIN connector.



Polarization Key for DIN style B & C connectors
catalog number 109-24670

OUTLINE

