



Insulated Terminals Hi Alumina, Ceramic



Double Turret

Refer to Figure 1440

External Threads

Part No.	"T" Thread	U	W	X	Y	Z	Terminal	DWV
1440A	6-32	.188	.250	.188	.312	.530	1281	2800
1440B	6-32	.188	.250	.250	.312	.530	1281	2800
1440C	6-32	.188	.250	.312	.312	.530	1281	2800
1440D	6-32	.188	.250	.375	.312	.530	1281	2800
1440E	4-40	.188	.250	.188	.312	.530	1281	2800
1440F	4-40	.188	.250	.250	.312	.530	1281	2800
1440G	4-40	.188	.250	.312	.312	.530	1281	2800
1440H	4-40	.188	.250	.375	.312	.530	1281	2800
1460A	6-32	.230	.312	.188	.359	.600	1280	3400
1460B	6-32	.230	.312	.250	.359	.600	1280	3400
1460C	6-32	.230	.312	.312	.359	.600	1280	3400
1460D	6-32	.230	.312	.375	.359	.600	1280	3400
1460E	4-40	.230	.312	.188	.359	.600	1280	3400
1460F	4-40	.230	.312	.250	.359	.600	1280	3400
1460G	4-40	.230	.312	.312	.359	.600	1280	3400
1460H	4-40	.230	.312	.375	.359	.600	1280	3400
1480A	2-56	.141	.188	.125	.203	.360	2030	2200
1480B	2-56	.141	.188	.218	.203	.360	2030	2200
1480C	4-40	.141	.188	.125	.203	.360	2030	2200
1480D	4-40	.141	.188	.218	.203	.360	2030	2200

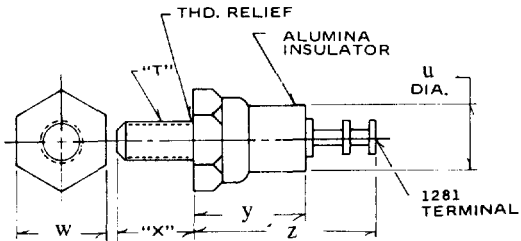


Fig. 1440

Double Turret

Refer to Figure 1441

Internal Threads

Part No.	"T" Thread	U	W	Y	Z	Terminal	DWV
1441A	2-56	.188	.250	.359	.580	1281	2800
1441B	4-40	.188	.250	.359	.580	1281	2800
1441C	6-32	.188	.250	.359	.580	1281	2800
1461	6-32	.230	.312	.391	.630	1280	3300
1461A	4-40	.230	.312	.391	.630	1280	3300
1481A	4-40	.141	.188	.266	.420	2030	2200
1481B	2-56	.141	.188	.266	.420	2030	2200

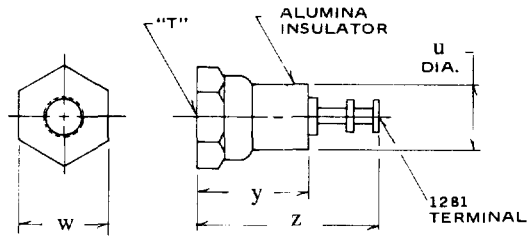


Fig. 1441

Double Turret

Refer to Figure 1442

Swage Type

Part No.	"D" Barrel Dia.	Board Thick	U	W	X	Y	Z	Terminal	DWV
1442A	.116	.031	.188	.250	.075	.312	.530	1281	2800
1442B	.116	.062	.188	.250	.105	.312	.530	1281	2800
1442C	.116	.094	.188	.250	.135	.312	.530	1281	2800
1442D	.116	.125	.188	.250	.165	.312	.530	1281	2800
1462A	.189	.031	.230	.312	.054	.359	.600	1280	3300
1462B	.189	.062	.230	.312	.093	.359	.600	1280	3300
1462C	.189	.094	.230	.312	.125	.359	.600	1280	3300
1462D	.189	.125	.230	.312	.156	.359	.600	1280	3300
1482A	.114	.031	.141	.188	.054	.203	.360	2030	2000
1482B	.114	.062	.141	.188	.094	.203	.360	2030	2000
1482C	.114	.094	.141	.188	.125	.203	.360	2030	2000
1482D	.114	.125	.141	.188	.156	.203	.360	2030	2000

Order Swage Tool 1442, 1462, 1482

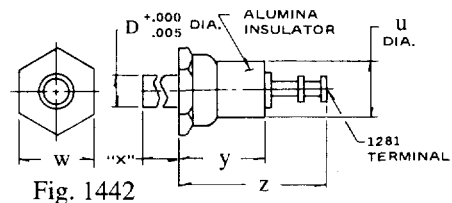


Fig. 1442

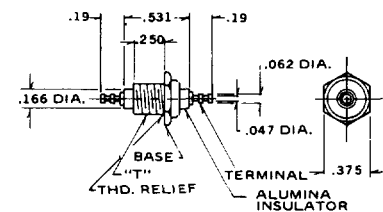


Fig. 1483

Double Turret

Refer to Figure 1483

Other

Part No.	"T" Thread	Mounting Hole	+ .003 - .001	DWV
1483	1/4-28	.257		1700

STANDARD PLATING SUFFIX TO PART NUMBER

SEE PAGE 93 FOR ALL PLATING OPTIONS

TERMINAL
-7 (Au over Cu)
-4 (Sb over Cu)
BASE
-5 (Sn over Cu)
-5 (Sn over Cu)

TOLERANCE: .xxx ± .010, .xx ± .016 (ALL DIMS. BEFORE PLATING)