

Non-Insulated Terminals Turret Solid Miniature

Please refer to Figure 1340

Part No.	Board Thick	Mounting Hole Dia +.003 -.001	D Nom	L Nom	Swage Tool
1340A	.031	.081	.079	.075	1340
1340B	.062	.081	.079	.105	1340
1340C	.094	.081	.079	.135	1340
1340D	.125	.081	.079	.165	1340
1340T	.094	2-56 THD	N/A	.125	N/A

1340T .125 hex across flats and thread relief.

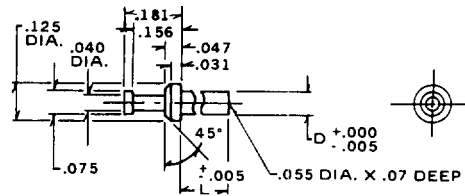


Fig. 1340

Please refer to Figure 1350

Part No.	Board Thick	Mounting Hole Dia +.003 -.001	D Nom	L Nom	Swage Tool
1350B	.062	.116	.114	.105	1350
1350C	.094	.116	.114	.135	1350
1350D	.125	.116	.114	.165	1350

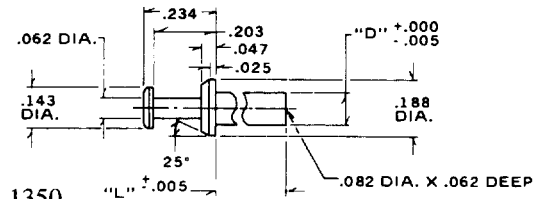


Fig. 1350

Please refer to Figure 1280

Part No.	Board Thick	Mounting Hole Dia +.003 -.001	D Nom	L Nom	Swage Tool
1280A	.031	.093	.091	.075	1280
1280B	.062	.093	.091	.105	1280
1280C	.094	.093	.091	.135	1280
1280D	.125	.093	.091	.165	1280

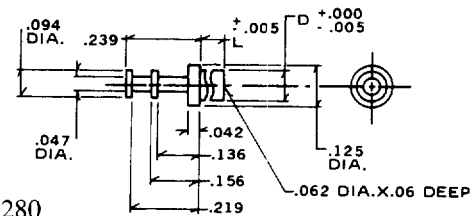


Fig. 1280

Please refer to Figure 1281

Part No.	Board Thick	Mounting Hole Dia +.003 -.001	D Nom	L Nom	Swage Tool
1281A	.031	.092	.090	.078	1281
1281B	.062	.092	.090	.109	1281
1281C	.094	.092	.090	.140	1281
1281D	.125	.092	.090	.171	1281
1281Z	N/A	.092	.090	.125	1281

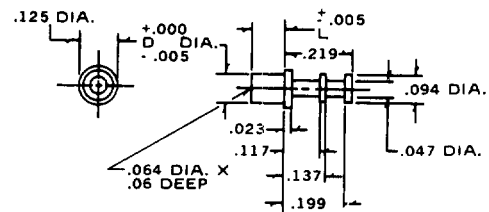


Fig. 1281

Please refer to Figure 1282

Part No.	Board Thick	Mounting Hole Dia +.003 -.001	D Nom	L Nom	X	Swage Tool
1282A	.031	.092	.090	.078	.060	1282
1282B	.062	.092	.090	.109	.094	1282
1282C	.094	.092	.090	.140	.094	1282
1282D	.125	.092	.090	.171	.094	1282

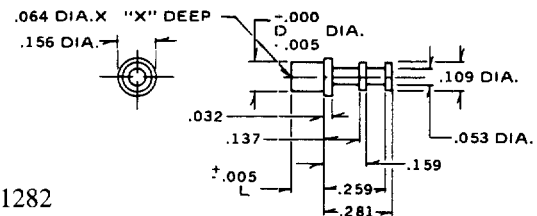


Fig. 1282

Standard Plating Suffix to Part Number
See Page 93 for all plating options.

Terminal
-1 (Ag over Cu)

TOLERANCE: .xxx ± .005, .xx ± .01 (ALL DIMS. BEFORE PLATING)